

Service-Programm  
**Entkalken**  
Service Program  
**Descaling**

|    |                                     |    |                                |    |                              |    |   |
|----|-------------------------------------|----|--------------------------------|----|------------------------------|----|---|
| 1  | Service-Entkalken<br>i-Taste 3 sek. | 2  |                                | 3  | ca. 3 Sek.<br>approx. 3 sec. | 4  | ( Entkalkungsprogramm )<br>starten mit >□ |
|    | Service-descale<br>i-button 3 sec.  |    |                                |    |                              |    | ( Descaling program )<br>start with >□    |
| 5  |                                     | 6  |                                | 7  |                              | 8  |   |
|    |                                     |    |                                |    |                              |    | ca. 30 Sek.<br>approx. 30 sec.            |
| 10 |                                     | 11 | ca. 20 Min.<br>approx. 20 min. | 12 |                              | 13 | ca. 1 Min.<br>approx. 1 min.              |
|    |                                     |    |                                |    |                              |    |   |
| 15 |                                     | 16 |                                |    |                              |    |   |

Service-Programm  
**Reinigen**  
Service Program  
**Cleaning**

|    |                                    |    |  |    |                              |   |  |
|----|------------------------------------|----|--|----|------------------------------|---|--|
| 1  | Service-Reinigen<br>i-Taste 3 sek. | 2  |  | 3  | ca. 3 Sek.<br>approx. 3 sec. | 4 | ( Reinigungsprogramm )<br>starten mit >□                         |
|    | Service-clean<br>i-button 3 sec.   |    |  |    |                              |   | ( Cleaning program )<br>start with >□                            |
| 5  |                                    | 6  |  | 7  |                              | 8 | Reinigungsprogramm läuft...<br>    ...<br>cleaning...<br>    ... |
|    |                                    |    |  |    |                              |   |  |
| 10 | ca. 7 Min.<br>approx. 7 min.       | 11 |  | 16 |                              |   |  |
|    |                                    |    |  |    |                              |   |  |

Service-Programm  
**Calc'n'Clean**  
Service Program  
**Calc'n'Clean**

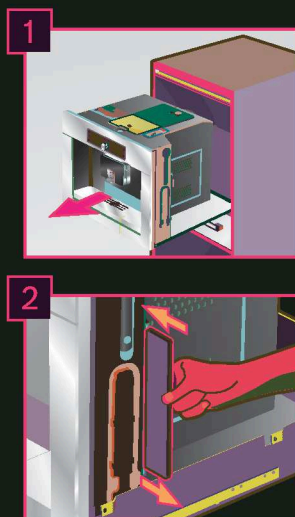
|    |   |    |  |    |                                |    |                                 |
|----|---|----|--|----|--------------------------------|----|---------------------------------|
| 1  | Service-Calc'n'Clean<br>i-Taste 3 sek.      | 2  |  | 3  | ca. 3 Sek.<br>approx. 3 sec.   | 4  | ( Calc'n'Clean starten mit >□ ) |
|    | Service-<br>Calc'n'Clean<br>i-button 3 sec. |    |  |    |                                |    | ( Calc'n'Clean start with >□ )  |
| 5  |   | 6  |  | 7  |                                | 8  |                                 |
|    |   |    |  |    |                                |    | ca. 60 Sek.<br>approx. 60 sec.  |
| 10 |   | 11 |  | 12 | ca. 20 Min.<br>approx. 20 min. | 13 |                                 |
|    |   |    |  |    |                                |    | ca. 8 Min.<br>approx. 8 min.    |
| 15 |   | 16 |  | 17 |                                |    |                                 |
|    |   |    |  |    |                                |    |                                 |

**Kurzanleitung**  
Quick User Guide





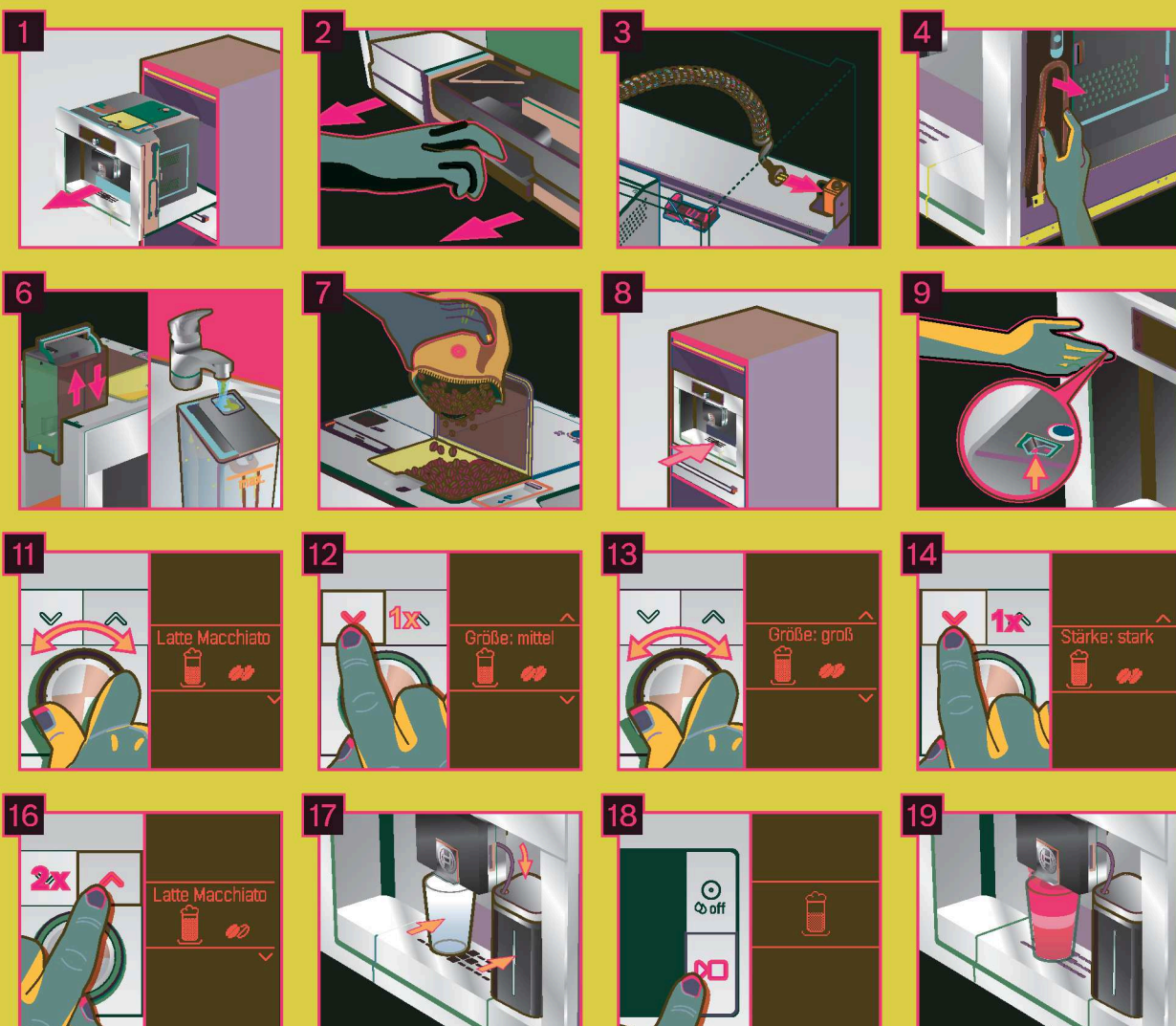
Kurzanleitung  
**Aufbewahren**  
Quick User  
Guide  
**Storage**



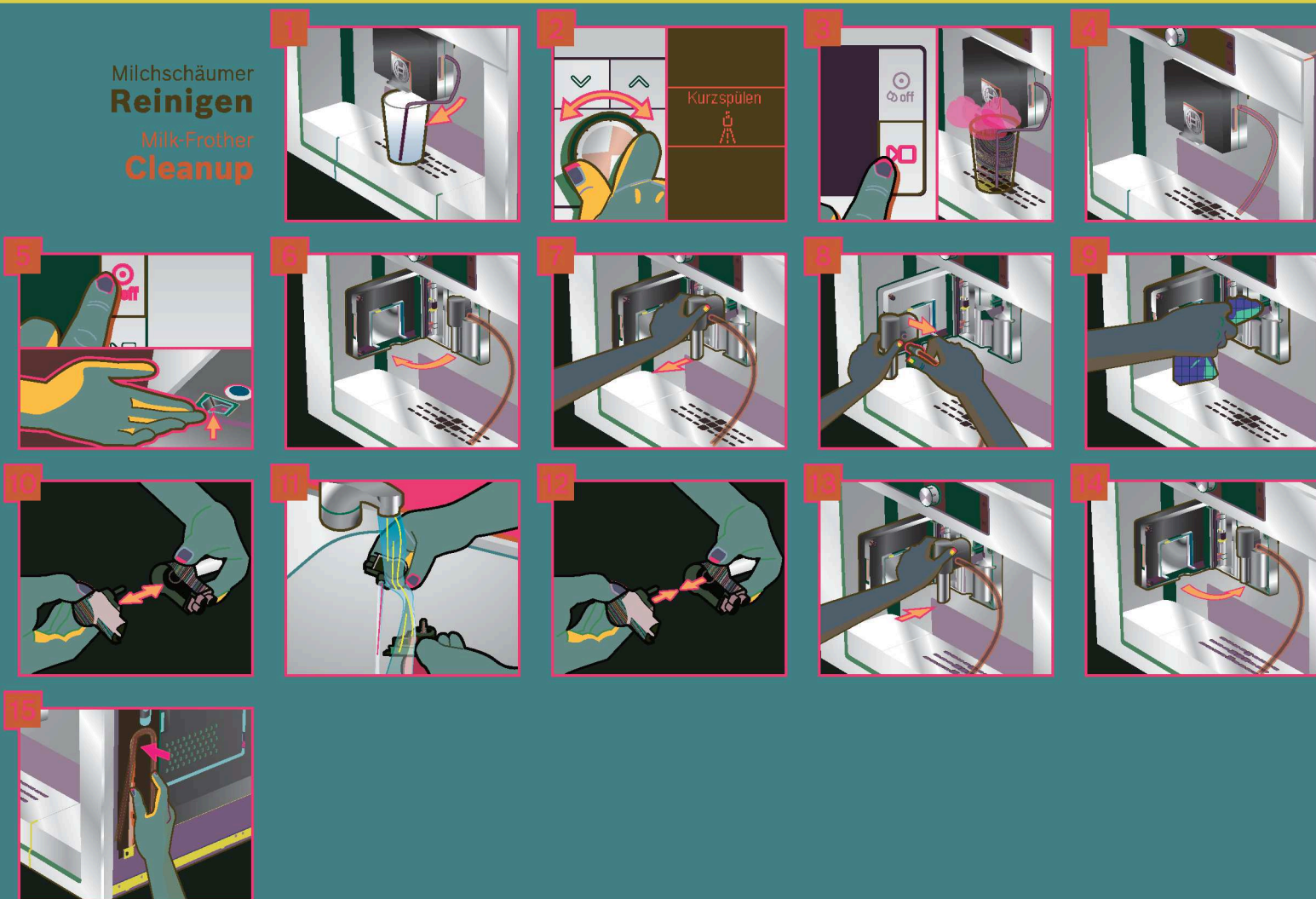
Vor Gebrauch unbedingt die  
Gebrauchsanleitung lesen.  
Please read the instruction  
manual before use.

Mat. Nr. 5090479309

Ein Beispiel Zubereitung  
**Macchiato**  
Sample Preparation  
**Macchiato**



Milchschaumer  
**Reinigen**  
Milk-Frother  
**Cleanup**



Brüheinheit  
**Reinigen**  
Brew Cartridge  
**Cleanup**

