



**BOSCH**

Invented for life

Perfect Result at Your  
Fingertips

一按啟動智控恆溫

**Instantaneous Water Heater**  
即熱式熱水爐

Made in Portugal  
葡萄牙製造



## Hot water with precision temperature: instantaneous water heaters from Bosch

### Bosch即熱式熱水爐，溫度穩定舒適， 暖水源源不絕

Bosch instantaneous water heaters boast intelligent functions and deliver the benefits and uses that matter to you. Our features and benefits at a glance:

Bosch 的即熱式熱水爐具備多項智能技術，設計貼心周到，處處為您設想。以下闡明了各功能的優點和特色，讓您一目了然：

- ▶ **Flexibility in power upgrade\*** – Supply of hot water can be further speed up, 15kW heaters are upgradable to 18kW.  
**升級功率選擇\*** – 可提供更快的熱水輸出，原為 15kW 的型號可升級至 18kW。
- ▶ Safety cut-off with air **bubble detection system**, the water temperature will climb up after 30 seconds automatically.  
**氣泡感應系統** – 能防止氣泡之產生使發熱管過熱而輸出高溫熱水，減低燙傷危險。例如於短時間內連續開水龍頭便會使發熱管內產生氣泡，系統感應到氣泡時會隨即中斷加熱及於 30 秒後自動重新升溫。
- ▶ **Slim design.**  
**超薄纖巧設計。**
- ▶ **CLICKFIX plus®** installation technology for unrivalled assembly speed – Install quickly, easily and accurately in three short steps.  
**CLICKFIX plus® 易嵌式安裝** – 只需三個步驟，安裝簡易，快捷而且準確。
- ▶ **Flexible connection pipes** for easy connection to water mains.  
**可移動喉管**，易於接駁水源。
- ▶ **Splash-proof protection** – Compatible to IP25 splash-proof standard.  
**防水保護** – 符合 IP25 防水標準。
- ▶ **VDE Safety-tested.**  
**通過 VDE 安全測試。**

\* The power upgrade setting should comply with the electrical connection requirements. On-site total power supply has to be checked by qualified electricians recognised by the Government authority before installation.  
功率之升級調節須配合安裝地點的電源及電源線規格，並由政府認可的合資格電工現場評估後作適當調節。

## Instantaneous water heaters from Bosch – the entire range and features at a glance

### Bosch即熱式熱水爐系列與功能概覽



	RDE1518407	RDE18307	RDH18400	RDH06111 RDH06101
	電子恆溫/控溫即熱式 Instantaneous electronically controlled		水壓控制即熱式 Instantaneous hydraulically controlled	
Power upgrade 升級功率	■			
Air bubble detection 氣泡感覺系統	■	■		
Slim design 超薄纖巧設計	■	■		
CLICKFIX plus® 易嵌式安裝	■	■	■	
Flexible pipes 可移動喉管	■	■	■	
Splash-proof protection 防水保護	■	■	■	■ IP24D
VDE standard VDE 安全標準	■	■	■	■

## Water Heater Specifications

### 熱水爐規格



Model 型號	RDE1518407		RDE18307		RDH18400
Style 款式	電子恆溫/控溫即熱式 Instantaneous electronically controlled water heater				水壓控制即熱式 Instantaneous hydraulically controlled water heater
Programmes 程序					
Heating settings 預設溫度	4 heating settings 四個預設溫度： Rinsing, bathing, showering (approx. 40°C) and hands washings 洗滌，浸浴，淋浴（大約 40°C）及洗手		Fixed heating setting 預設溫度： 55°C		2 heating settings 兩種溫度預設選擇： "e" economy 節能模式 "II" intensive setting 增強加熱模式
Functions 功能					
Warm water output: from 12 inlet temperature 出水量：由 12°C 升溫至					
to 38°C (without flow-rate limiter 38°C (安裝限流器前))	[l 公升 /min 分鐘]	8.1	9.8	9.8	9.9
to 38°C (with flow-rate limiter 38°C (安裝限流器後))	[l 公升 /min 分鐘]	6.5	6.5	6.5	-
to 60°C 60°C	[l 公升 /min 分鐘]	4.4	5.3	5.3	5.4
Technology 技術					
Bubble detection 氣泡感應系統 #		•		•	-
Warning signal in case of excessive temperatures and risk of scalding 高溫提示 – 當偵測到輸出水溫高於設定溫度時，顯示燈會作出提示		•		•	-
Bare wire heating system 直接即熱元件		•		•	•
Splash-proof standard 防水標準		IP25		IP25	IP25
Control 操控					
Temperature adjustable from/to 溫度調節	[°C]	30-60		(approx. 大約) 55	2 settings 2 種選擇
ON flow rate 最低啟動流量	[l 公升 /min 分鐘]	2.5		2.5	2.5
Minimum working pressure with flow-rate limiter (without) 最低運作水壓 (解除限流器後)	[bar 巴]	0.09 (0.25)		0.09 (0.25)	0.7 (0.4)
Maximum working pressure 最高運作水壓	[bar 巴]	10		10	10
Design 設計					
LED status display LED 顯示燈		•		•	-
Flexible connection pipes for easy connection to water mains 可移動喉管，易於接駁水源		•		•	•
CLICKFIX plus® installation CLICKFIX plus® 易嵌式安裝		•		•	•
Technical information 技術資料					
Power Upgrade 升級功率選擇 *		•	-	-	-
Power rating 功率	[kW 千瓦]	15	18	18	18
Electrical connection 3 PE- 電源規格 3 相 (PE)-	[V/A]	400 / 21.6 380 / 20.5	400 / 25.4 380 / 24.2	400 / 25.4 380 / 24.2	400 / 25.9 380 / 24.6
Electrical Current 電流	[A 安培]	25	32	25	32
Suggested cable cross-section 建議電源線橫切面積	[mm <sup>2</sup> 平方毫米]	4	4	4	4
Water pipe connection thread 喉管尺寸	["]	G 1/2 A	G 1/2 A	G 1/2 A	G 1/2 A
Other 其他					
Dimensions (H x W x D) 尺寸 (高 x 闊 x 深)		483 x 236 x 122 mm		483 x 236 x 115 mm	472 x 236 x 139 mm
Net weight 淨重	[kg 千克]	4.3		4.1	3.3
Country of origin 原產地		Portugal 葡萄牙		Portugal 葡萄牙	Portugal 葡萄牙

\* 功率之升級調節須配合安裝地點的電源及電源線規格，並由政府認可的合資格電工現場評估後作適當調節。 The power upgrade setting should comply with the electrical connection requirements. On-site total power supply has to be checked by qualified electricians recognised by the Government authority before installation.

# 在每次接駁電源或重新啟動後，需以最少每分鐘6公升之流量開動熱水爐以去除發熱管內的氣泡。當這初始安全開動後，熱水爐的最低啟動流量為每分鐘2.6公升。 At initial power connection, 6l/min of water have to flow through the appliance once for air bubble removal. After this initial safety rinsing, a flow-rate of 2.6l/min is sufficient to switch on the appliance.

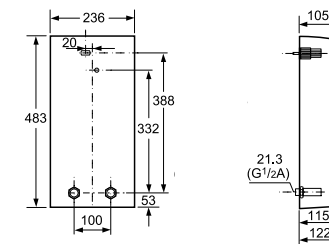
## Water Heater Specifications 熱水爐規格



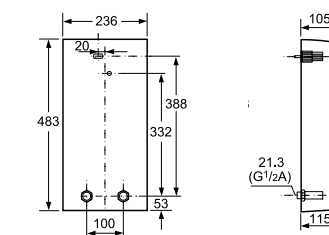
Model 型號	RDH06111	RDH06101
Style 款式	小型水壓控制即熱式熱水爐 Compact instantaneous hydraulically controlled water heater	
Programmes 程序		
Heating settings 預設溫度	38°C	
Functions 功能		
Warm water output: from 12 inlet temperature 出水量：由 12°C 升溫至 38°C	[l 公升 / min 分鐘]	3
Technology 技術		
Pressurised unit, can be connected to standard unvented mixer taps 高壓式設計，可接駁各款水喉		•
Spray regulator 噴灑控制器		•
Splash-proof standard 防水標準		IP24D
Control 操控		
ON flow rate 最低啟動流量 [l 公升 / min 分鐘]		2.3
Minimum working pressure with flow-rate limiter (without) 最低運作水壓 (解除限流器後)	[bar 巴]	1
Maximum working pressure 最高運作水壓	[bar 巴]	10
Design 設計		
In/outlet water connection 機身入出水位	Upward 向下	Downward 向上
Permanent electrical connection 永久接線安裝		•
On/off indication lamp 開關顯示燈		•
Technical information 技術資料		
Power rating 功率	[kW 千瓦]	6
Electrical connection 3 PE- 電源規格 3 相 (PE)-	[V/A]	220
Electrical Current 電流	[A 安培]	26
Suggested cable cross-section 建議電源線橫切面積	[mm <sup>2</sup> 平方毫米]	4
Water pipe connection thread 喉管尺寸	["]	G 1/2 A      G 3/8 A
Other 其他		
Dimensions (H x W x D) 尺寸 (高 x 闊 x 深)		235 x 144 x 100 mm
Net weight 淨重	[kg 千克]	1.8
Country of origin 原產地		Portugal 葡萄牙

## Bosch installation diagrams 熱水爐安裝圖

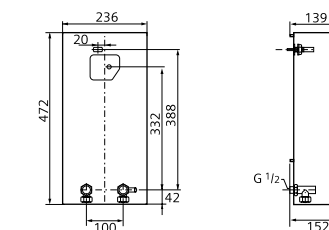
RDE1518407



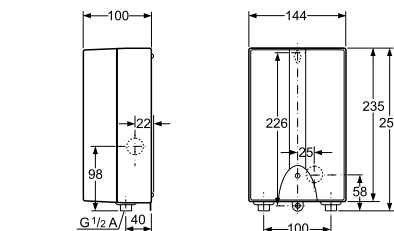
RDE18307



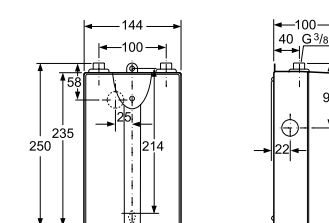
RDH18400



RDH06111



RDH06101



### Customer Contact Center 客戶服務中心

Unit 07, 23/F, CDW Building, 388 Castle Peak Road, Tsuen Wan, New Territories, Hong Kong  
香港新界荃灣青山公路388號中染大廈23樓07室

Customer Contact Hotline 客戶服務熱線：

2626 9655 (Hong Kong 香港) / 0800 863 (Macau local call only 澳門本地專線)

[www.bosch-home.com.hk](http://www.bosch-home.com.hk)

 [www.facebook.com/boschhomeHK](https://www.facebook.com/boschhomeHK)

 [www.youtube.com/boschhomeHK](https://www.youtube.com/boschhomeHK)

 [www.instagram.com/boschhomehongkong/](https://www.instagram.com/boschhomehongkong/)



Official Site  
官方網頁



Our Facebook page:  
@boschhomehk



Our YouTube channel:  
Bosch Home HK



Our Instagram:  
boschhomehongkong

The product images used in the catalogue are for reference only; the models are subject to availability.  
本目錄中所用的產品圖像僅供參考；出售之型號可能有差異。

Models numbers and specifications are for reference only and are subject to change without prior notice. Bosch is continuously seeking to improve specification, design and production of its appliances and alterations may take place regularly. All descriptions and installation diagrams are intended as a guide only. For additional technical information, full dimensional and installation details, please refer to the instruction manual supplied with the appliance. Electrical and gas connections should only be made in accordance with the regulations of the national authorities.

型號和規格僅供參考，如有改動，恕不另行通知。Bosch致力改進其電器之規格、設計和製作，因此可能會定期做出修改。所有描述和安裝圖示僅用作指導。關於其他技術資訊、完整尺寸和安裝詳情，請參閱電器隨附的使用說明書。電源與燃氣連接應按照政府有關部門的指引進行。

Rights of technical modification reserved, delivery subject to availability, colors of actual products may vary from illustrations.

博西華家用電器有限公司保留更改本目錄中的產品功能之權利。產品實物之顏色可能與相片有輕微差異。

### Your dealer will be able to provide you with reliable information.

經銷商可為您提供可靠的資訊。

©2022 BSH Home Appliances Limited. All rights reserved. All contents and information contained in this Catalogue are proprietary to BSH Home Appliances Limited and are subjected to copyright protection. Reproduction, republication, redistribution or unauthorized use of any content or information contained in this Catalogue is expressly prohibited without the prior written consent of BSH Home Appliances Limited.

Printed in Hong Kong [03.2022]

©2022博西華家用電器有限公司。所有權利保留。本目錄所載的全部內容和資料均屬博西華家用電器有限公司所有，且受版權保護。任何人士如未獲得博西華家用電器有限公司事先給予書面許可，不得複製、轉載、發放或擅用本目錄中的任何內容或資料。

香港印刷 [03.2022]